

EAGLE PREMIER FIFTH WHEELS BY JAYCO

EAGLE PREMIER



Quality

built for

PREMIER CAMPING

MIDDLEBURY, IN



Jayco

Quality

the many reasons

WE CALL IT

EAGLE
premier



reason #2

HIDE-A-BED

Provides a standard hide-a-bed sofa with air mattress for overnight guests.



reason #1

SPACIOUS INTERIORS



reason #3

WALK-IN CLOSET

Combines with oversized dresser drawers to accommodate your wardrobe.



YOU WANT PEACE OF MIND

That's why we offer our exclusive 2-year Co-Pilot Warranty, the industry's best and most comprehensive warranty program.



reason #6
BATTERY COMPARTMENT

Offers dual capacity with battery disconnect and easy sidewall access, while a separate location protects your other belongings.



reason #5
STOR-GALORE

Features pass-through storage, slam baggage doors and strut assist for ultimate convenience.



reason #7
KEY FOB REMOTE

Operates your slideouts, electric patio awning, patio lights and electric rear jacks.

reason #4
HIGH-END KITCHEN

Flaunts solid-surface countertops and a pull-out sprayer faucet.



reason #8
STUNNING CABINETRY

Combines pre-drilled, screwed cabinetry with energy-efficient halogen lighting.



reason #10
MOR/RYPDE SUSPENSION

Replaces typical steel equalizers with rubber springs to reduce vibration and isolate road shock.



reason #9
Protects against extreme temperatures as low as 0° F or as high as 100° F.



WITH YOUR PURCHASE

Every Jayco RV undergoes rigorous quality control testing before it leaves the factory, so you can be confident your new Jayco will continue to provide the ultimate in reliability for years to come.

For a copy of our 2-year Co-Pilot limited warranty with full terms and conditions, ask your local Jayco dealer.



TO LEARN MORE ABOUT OUR QUALITY CONTROL TESTING, SCAN HERE WITH YOUR SMARTPHONE.



EAGLE PREMIER FIFTH WHEEL

THE PREMIER PACKAGE

Eagle Premier isn't your ordinary fifth wheel. Multiple slideouts, a private bathroom, roomy master suite and family-friendly bunk rooms combine with a plentiful list of high-end amenities, setting Eagle Premier apart from anything else in its price range.



EAGLE PREMIER 351MKTS | COCOA



EAGLE PREMIER 351MKTS | COCOA



EAGLE PREMIER 351MKTS | COCOA



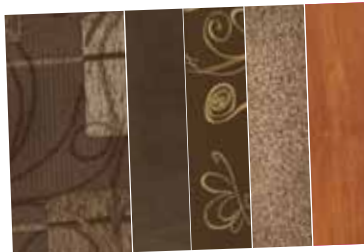
EAGLE PREMIER 343RKTS | AMBER

INTERIOR DÉCOR CHOICES

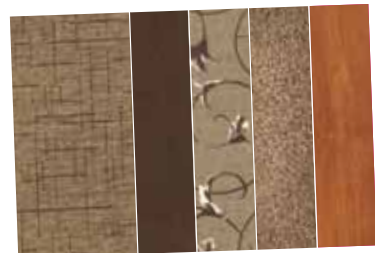
AMBER



BROWNSTONE



COCOA



jayco CONSTRUCTION



CLIMATE SHIELD

ULTIMATE WEATHER PROTECTION

Extend your camping season. Offering weather protection against extreme temperatures (as low as 0° F or as high as 100° F), the Climate Shield combines the industry's most-protected underbelly with the class's highest-BTU output furnace. The enclosed underbelly, tucked and foamed inside the I-beam rails, features blown heat for the ultimate four-season camping experience.

The Climate Shield features the following R-values.

VALUE	UNIT AREA	TYPE OF INSULATION
R-7	All vertical walls	R-7 block foam
R-11	Behind front and rear cap	R-11 insulation
R-21	Roof	R-21 block foam
R-22	Main floor	R-7 insulation + R-14 foil
R-14	Slide floor	R-14 foil
R-22	Bedroom floor	R-7 insulation + R-14 foil
R-14	Inside open pinbox	R-14 foil
R-14	Enclosed drop-frame overhang	R-14 foil

WALL CONSTRUCTION

- 1 Vacuum-bonded layers
- 2 Smooth fiberglass exterior
- 3 Welded aluminum frames with metal backers
- 4 Eurostyle front and rear caps
- 5 Double layer of front cap fiberglass insulation

FLOOR CONSTRUCTION

- 6 5/8" tongue-and-groove plywood deck on 2"x 3" wooden floor joists
- 7 Reflective foil insulation
- 8 Poly Flex covering and an enclosed, heated underbelly
- 9 Bedroom floor Flexfoil and fiberglass insulation

ROOF CONSTRUCTION

- 10 Vacuum-bonded layers
- 11 1/4" plywood decking on 5" arched aluminum trusses
- 12 Block-foam insulation (R-21)
- 13 Seamless rubber roof

STANDARDS AND OPTIONS

STANDARD EXTERIOR EQUIPMENT

One-piece seamless roof covering
 10" I-Class cambered structural I-beam frame
 Polar Barrier insulation package (see package details)
 Nev-R-Adjust brakes
 E-Z Lube axles
 MOR/ryde CRE 3000 suspension system
 Stor-Galore pass-through basement storage
 Cable TV and outlet in basement
 Dual battery compartment with disconnect
 G20 dark-tinted, safety-glass windows
 Uni-Dock utility center, heated and enclosed
 50-amp power service with detachable cord
 35,000-BTU furnace (minimum)
 Cable/satellite prep
 Digital TV antenna
 Electric rear stabilizer jacks
 Undermounted spare tire

STANDARD INTERIOR EQUIPMENT

Concord Cherry, craftsman-style, raised-panel cabinetry
 Lumbercore, screwed-style cabinet construction
 Steel ball bearing drawer guides, 75-lb. capacity, full extension
 LG brand, high-gloss, solid-surface kitchen countertops
 Large, split, undermounted Stonecast kitchen sink with covers
 8 cu. ft. refrigerator with high-gloss residential finish
 3-burner range with 9,000-BTU SuperBurner and piezo igniter
 Oversized 21" oven
 90-amp power center with Charge Wizard
 Key fob remote for slideouts, patio awning/light, power jacks
 Ceiling fan and light
 Free-standing table and 4 chairs (select models)
 40" LCD HDTV
 Porcelain bath stool with foot flush
 CD stereo in bunk room (365BHS)
 Deluxe bedding package
 Washer/dryer prep

CUSTOMER VALUE PACKAGE (MANDATORY)

Aluminum rims
 Extendable main entrance grab handle
 Large patio scare lights (2)
 Electric patio awning
 Crowned, laminated roof with R-21 insulation
 Microwave
 20 gal./hr. quick recovery gas/electric DSI water heater (10 gal.)
 Canister style, in-line water purifier
 15,000-BTU A/C with Chillgrille feature
 Multi-Media Premium Sound System with AM/FM/CD/DVD and MP3 input jack
 Bath power vent
 Bath skylight
 60" x 80" Cloud Ten deluxe pillow top mattress
 Under-bed floor safe

OPTIONS

4-point leveling system
 Keyless main entry door
 Thermal-pane, tinted-safety glass windows
 Slideout awnings
 MOR/ryde pin box
 Reese Revolution pin box (allows for 90-degree turn on 6' bed)
 Generator prep
 5,500-watt gasoline generator with prep
 Bike rack/cargo tray system
 Outside grill
 Satellite Kit: Dish, tripod, 20' cable, hand-held satellite locator
 12 cu. ft. refrigerator
 30" convection microwave oven
 Kitchen power vent
 LedgeStone fireplace (select models)
 Electric fireplace
 Linoleum in living area (select models)
 Free-standing table and 4 chairs (select models)
 King bed (select models)
 In/out 22" LCD HDTV with integrated DVD player in bedroom
 2nd bedroom A/C, 13,500-BTU ducted
 Customer Value Package with 15,000-BTU A/C and heat pump

* Eagle Premier was tested in 0°F and 100°F weather over an extended period of time in a controlled environment and all functions of the coach were fully operational. Testing cannot account for natural elements, such as wind or moisture. In actual use, unit may not perform as well. In addition, outside components are subject to freezing and require steps to properly insulate. Jayco's warranty does not cover damage caused by freezing.

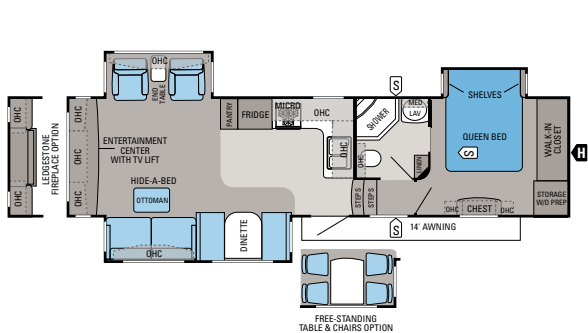
eco advantage™



THE JAYCO ECOADVANTAGE IS OUR COMPANY'S COMMITMENT TO PROTECTING THE ENVIRONMENT. Scan this QR code with your smartphone to watch a video about our efforts and the impact we're having on our world.

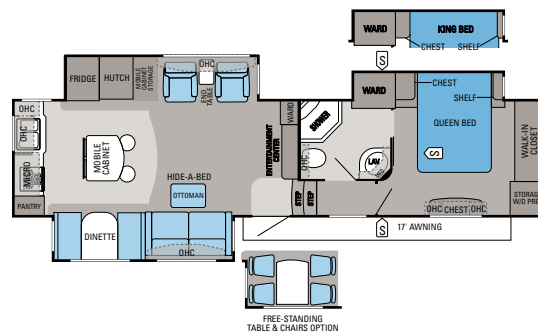
www.jayco.com/ecoadvantage

FLOORPLANS



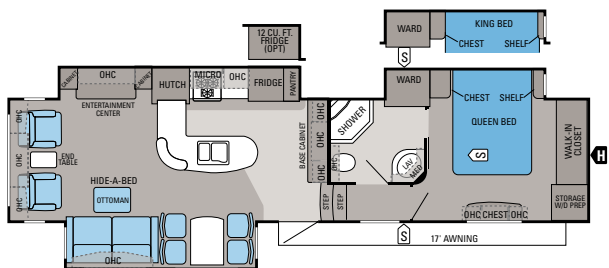
EAGLE PREMIER | 321RLTS

Ext. Length: 35' 5" Ext. Height: 152" Unloaded Weight (lbs.): 10,315 Sleeps: 4-6



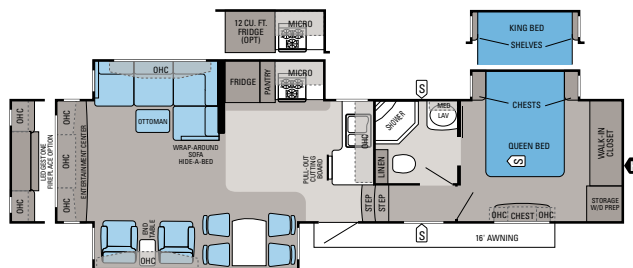
EAGLE PREMIER | 343RKTS

Ext. Length: 38' 4" Ext. Height: 151" Unloaded Wt. (lbs.): 11,075 Sleeps: 4-6



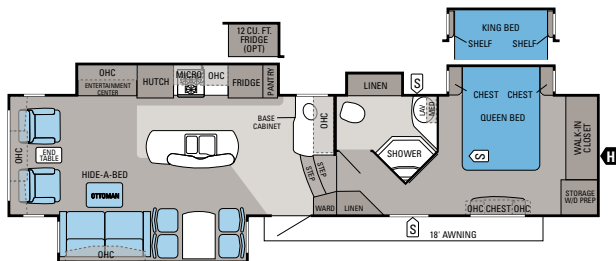
EAGLE PREMIER | 351MKTS

Ext. Length: 39' 7" Ext. Height: 151" Unloaded Wt. (lbs.): 11,180 Sleeps: 4



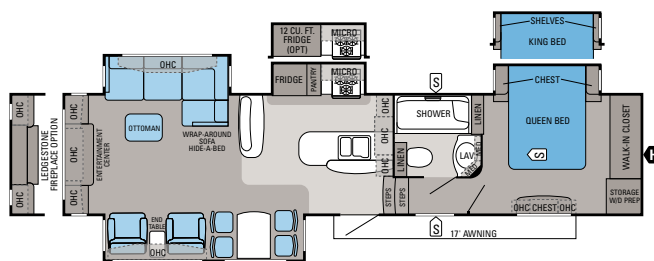
EAGLE PREMIER | 351RLTS

Ext. Length: 38' 6" Ext. Height: 152" Unloaded Wt. (lbs.): 10,685 Sleeps: 4



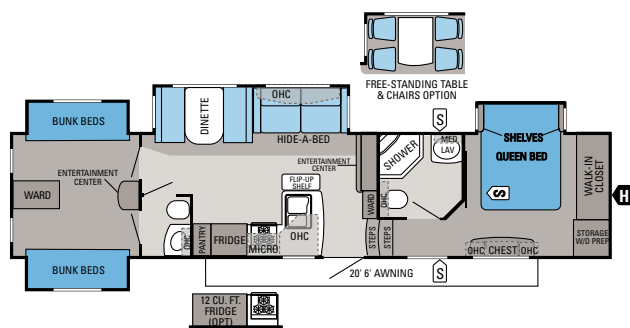
EAGLE PREMIER | 361MKQS

Ext. Length: 40' 6" Ext. Height: 151" Unloaded Wt. (lbs.): 11,165 Sleeps: 4



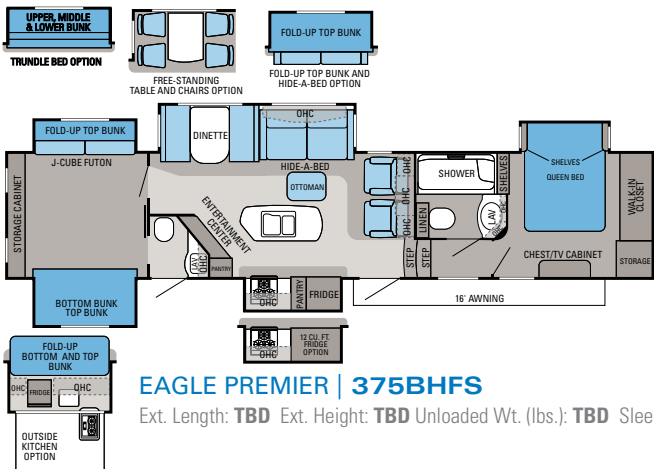
EAGLE PREMIER | 361REQS

Ext. Length: 39' 9" Ext. Height: 151" Unloaded Weight (lbs.): 11,430 Sleeps: 4-6



EAGLE PREMIER | 365BHS

Ext. Length: 40' 1" Ext. Height: 160" Unloaded Wt. (lbs.): 11,325 Sleeps: 8-10



EAGLE PREMIER | 375BHFS

Ext. Length: TBD Ext. Height: TBD Unloaded Wt. (lbs.): TBD Sleeps: 8-11

SPECIFICATIONS

FLOORPLAN	EXT. LENGTH	EXT. WIDTH	EXT. HEIGHT (WITH A/C)	EXT. HEIGHT (WITH OPT. BEDROOM A/C)	INT. HEIGHT	UNLOADED VEHICLE WEIGHT (LBS.)	DRY HITCH WEIGHT (LBS.)	GROSS VEHICLE WEIGHT RATING (LBS.)	CARGO CARRYING CAPACITY (LBS.)	FRESH WATER CAPACITY (WITH WATER HEATER) (GAL.)	GRAY WASTEWATER CAPACITY (GAL.)	TOILET/BLACK WASTEWATER CAPACITY (GAL.)
321RLTS	35' 5"	96"	152"	159"	77"	10,315	2,285	14,500	4,185	85	87	50
343RKTS	38' 4"	96"	151"	159"	77"	11,075	2,175	15,250	4,175	87	87	50
351MKTS	39' 7"	96"	151"	160"	77"	11,180	2,185	15,250	4,070	87	87	50
351RLTS	38' 6"	96"	152"	160"	77"	10,685	2,305	15,250	4,565	87	85	50
361MKQS	40' 6"	96"	151"	160"	77"	11,165	2,315	15,500	4,335	87	87	50
361REQS	39' 9"	96"	151"	159"	77"	11,430	2,320	14,950	3,520	85	87	50
365BHS	40' 1"	96"	160"	160"	77"	11,325	2,275	15,800	4,475	85	87	87
375BHFS	TBD	96"	TBD	TBD	77"	TBD	TBD	TBD	TBD	85	85	95

The weights of certain options and/or option packages are not included in the UWW listed in the specification charts.



THE **Jayco**[®] family STORY

THE JAYCO STORY BEGAN IN 1968 WITH OUR FAMILY—THE BONTRAGERS. Lloyd Bontrager created an innovative, easy-to-use lifter system that led to a better fold-down camper. Loaded with more conveniences, he believed his camper would bring families closer together.

Since then, the Jayco family has grown. From our factory to our front office, from our salespeople to our suppliers, our family bond is four decades strong with the support of more than 300 Jayco dealers.

Together, we're helping make new family stories. **YOUR FAMILY STORY.**

welcome to the Jayco family



Establishing a solid relationship with your local Jayco dealer is a key component in the enjoyment of your new Jayco. By purchasing from a local dealer, you will have a convenient location for sales, parts and service support. We hope you enjoy working with them as much as we do.



Jayco proudly sponsors Tread Lightly!, a nonprofit organization whose mission is to empower generations to enjoy the outdoors responsibly through education and restoration.

Unloaded Vehicle Weight (UWW): Sometimes referred to as "Dry Weight," UWW means the typical weight of this trailer as built at the factory. The UWW, as used in product literature and other promotional materials, does not include cargo, fresh water, propane, options or dealer-installed accessories.

Gross Vehicle Weight Rating (GVWR): GVWR means the maximum permissible weight of the trailer, including the UWW plus passengers, personal items, all cargo, fluids, options, and dealer-installed accessories. The GVWR is equal to or greater than the sum of the UWW and the CCC.



From RV insurance to extended warranties, JayPlus has it covered. Ask your Jayco dealer about our exclusive JayPlus program today.

Cargo Carrying Capacity (CCC): CCC means the maximum weight of all passengers, personal items, food, fresh water, propane, tools, other cargo and dealer-installed accessories that can be carried by the trailer. CCC is equal to or less than GVWR minus UWW. The addition of options will decrease the CCC.

Hitch Weight (HW): The hitch weight, as used in product literature and other promotional materials, does not include cargo, fresh water, propane gas, options or dealer-installed accessories. The addition of these types of items will either add to or subtract from the stated hitch weight.



Travel worry-free with Jayco's Customer First Roadside Assistance program, yours at no cost during your first year of ownership. This program is offered through Coach-Net, the largest RV emergency road service in the country, and gives you immediate access to dependable roadside assistance and support services with a simple phone call.



As a Jayco owner, you can be part of the Jayco Jafari International Travel Club. Ask your dealer about the Jafari "flight" in your area, write Jayco or visit our website.

It is important for your safety and enjoyment that your tow vehicle be adequately sized and equipped to tow and handle the GVWR of the RV you select. Review weights and rating of your tow vehicle and consult a competent advisor for questions or advice. Whether you are new to RVing or a veteran, get a feel for the performance of your tow vehicle before heading out on the roadways. When you tow an RV, you must drive differently than when you drive a single vehicle. Practice hooking up, driving, backing up and braking in a safe environment or seek out professional instruction. Jayco affixes a weight label to each RV which lists weight information for that vehicle. See specifications chart inside.

Jayco, Inc., P.O. Box 460, Middlebury, IN 46540, www.jayco.com

See dealer for further information and prices. All information in this brochure is the latest available at the time of publication approval. Jayco reserves the right to make changes and to discontinue models without notice or obligation. Photos in this brochure may show optional equipment and props for photography purposes. RVs built for sale in Canada may differ to conform to Canadian codes. ©2012 Jayco, Inc. 13-EGPR-PL 1212-40K Printed in U.S.A.