

FUN MOVER 2007



FW
Four Winds
INTERNATIONAL

Change *The Way* **You Play!**



Model 34C shown with the Silver Storm sport package interior with Granite laminate cabinetry, booth dinette and Chamay Black hide-a-bed sofa.

How do you like to have fun outdoors? Riding the back roads on your favorite dirt bike. Exploring new trails on an ATV. Taking in the beautiful countryside as you soar like a bird in a hot air balloon. Easily transporting your champion dogs to the next dog show. Enjoying some fun on the river in your boat, canoe or kayak. Or, just traveling in style to your favorite sporting event. The possibilities are endless!

You can do all this and more in the Fun Mover. It is the perfect "all-in-one" sport recreational vehicle.



Ricky Carmichael has many astonishing career accomplishments. As part of the Makita/Suzuki team, Carmichael is a 15-time AMA National Supercross and Motorcross champion. No other rider in the history of motocross has accomplished this feat.



“Comfortable living in front; roomy cargo area in back.”

the front with a roomy cargo area in the back. It's the perfect way to travel across town, across the state or across the country with your sports and hobby equipment.

Once you've reached your destination, you never have to worry about finding overnight

The Fun Mover combines all the comforts of a premier motorhome in

accommodations. With the Fun Mover, you can be as close to the action as you want to be. Fun Mover sport recreational vehicles are available in a variety of models from 31' to 41' with different size cargo areas to meet your hauling needs. From the comfortable living, sleeping and dining areas to abundant storage and cargo area features—you'll find a model to meet your needs, taste and lifestyle.

Once you experience the Fun Mover, you'll see that nothing else will quite measure up. In comfort. In quality. In value.



Above: Model 39D shown with Windswept Bronze interior and Maple cabinetry.

Left: New home entertainment center featuring 20" LCD television on electric swivel in cab-over.

features from which to choose, you can tailor the Fun Mover to meet your lifestyle needs.

Whether you like to entertain guests, relax with family and friends or enjoy weekend getaway adventures, the Fun Mover makes living away from home comfortable and convenient.

There is a choice of contemporary fabric or durable sport style interior decor packages. The interior features a full 84" ceiling height (not available on Models 31C and 31D), and the floor covering is a durable residential style linoleum throughout.

“Spacious floorplans designed with comfort and convenience in mind.”

You can enjoy all the comforts of home in the Fun Mover. Single and double slide-out models are available which dramatically expand the living area. With a wide variety of standard and optional



Above and right: Model 39D shown with Windswept Bronze interior and Maple cabinetry.

Below: Central vacuum system with hose and accessories make clean-up a snap.

The kitchen is well equipped with everything you need to meet your food preparation and storage needs. Appliances include a double door refrigerator, convection microwave and three-burner gas range top.

You can enjoy a quick snack or an elegant meal at the cozy dinette. When not in use, it easily converts into a bed when extra sleeping accommodations are required.

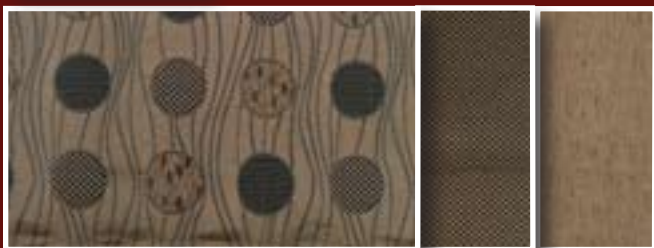


The living area on most models feature fluorescent lighting throughout, jackknife sofa or hide-a-bed sofa (depending on floorplan), Soft-Touch vinyl ceiling, day/night shades and LCD or flat screen television.

Interior Decor



CUBIC SANDSTONE



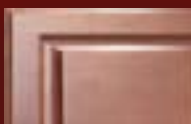
WINDSWEPT BRONZE



Standard Oak

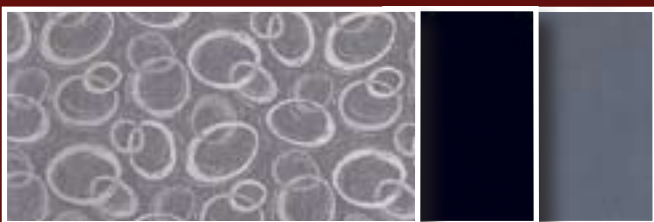


Optional Maple



Optional Cherry

Optional Sport Package



SILVER STORM



Standard Granite laminate



Model 34C shown with two jackknife cargo sofas. These extra-long vinyl sofas are perfect for relaxing after a busy day or entertaining friends. When not in use, they can be easily folded up against the wall and secured for traveling.

“Versatile cargo area can be used to entertain or as an extra sleeping area.”

The versatile cargo area in the Fun Mover can be used for more than just hauling your toys and equipment. It can be used as an additional area for entertaining guests, as well as a sleeping

area when additional sleeping accommodations are required.

The two jackknife cargo sofas provide comfortable seating for guests after a full day of activities. The back-rest of each sofa can be folded down flat to make two extra beds. When not in use, the sofas can be folded up flat against the wall and locked in place.



New queen-size electric drop-down bed in cargo area. There is an electric control that allows you to raise the bed when not in use.

The electric drop-down bed in the cargo area is a new feature. This popular option features a queen-size bed with innerspring mattress locked into a wall-mounted track. There is a convenient control to raise or lower the bed when necessary. When used as a sleeping area, it can be closed off from the rest of the motorhome for additional privacy. When using the cargo area to haul vehicles and equipment, the convenient Core-Trax™ tie-down system does the job. It consists of floor tracks that run along the sidewalls and center part of the floor in the cargo area. The moveable tie-down rings allow you to secure large items so they remain safely in place while traveling.





Model 34C shown with Glamis Sandstone exterior graphics package. The sturdy aluminum liftgate with 18" extension can lift up to 1,600-lbs. It can be easily raised and lowered with the touch of a button.

“Take your toys with you. Leave nothing behind.”

Fun Movers are available with different size cargo areas—so you can choose the model that best accommodates your needs. Cargo areas are 8' wide and range in lengths from 9'5" to 13'7".

The cargo area is separated from the living area with a fully sealed door that keeps fumes from seeping into the living area. In addition, there is

plenty of overhead storage cabinets for equipment and gear.

The walls are made from durable white fiberglass that is easy to maintain, and the tough rubberized flooring is water resistant.

All Fun Movers have a towing hitch so you can tow extra toys like boats, cars, trailers and more. A rugged 10,000-lb. trailer hitch is standard models 34D, 39C and 39D. Models 31C, 31D and 34C have a standard 5,000 trailer hitch.





For those who prefer a ramp for their vehicles and equipment, take a look at Model 31C (left), Model 31D (right) and model 34D (not shown). Model 31C has a 48" wide aluminum cargo ramp that easily attaches to the floor of the cargo area. When not in use, it is easily stored by rolling it into a storage

compartment underneath the cargo area floor, and locking it in place. Models 31D and 34D have a fold-down ramp door in the cargo area that is a full 99-1/4" wide. The non-skid surface allows you to safely unload your vehicles and equipment.



A convenient exterior water hose with sprayer is standard on all models. For bigger cleaning jobs, Models 39C and 39D are available with a full 60-gallon auxiliary water tank with sprayer and water pump.



The optional rear cargo screen is available on all models. It lets the breeze in and keeps the insects out when you are entertaining or just relaxing in the back of the Fun Mover.



A 20" LCD television located in the exterior storage bay is available as an option.



The exterior entertainment center features a compact disc player, antenna hook-up, and 110-volt and 12-volt outlet.



The Core-Trax™ tie-down system allows you to tie down any large items in the cargo area safely and conveniently.



Unlimited Uses



The Fun Mover can make any recreational sport more enjoyable. From dirt bike racing to ATVs, and hot air balloons rides to dog grooming—there is no limit to the uses of the Fun Mover.

You can travel anywhere knowing your

accommodations will always be comfortable and your vehicles and equipment will be safe and secure. Plus, the Fun Mover offers a variety of popular options* including:

- *Full-body paint packages*
- *Fully automatic hydraulic leveling jacks*



- *Observation deck (39C and 39D only)*
- *Outside entertainment with compact disc player*
- *20" LCD television in exterior storage compartment (39C and 39D only)*
- *AM/FM radio with compact disc player and two speakers in cargo area*

- *Diamond plate flooring in cargo area*
- *Rear cargo screen*
- *60-gallon auxiliary water tank with sprayer and water pump (39C and 39D only)*
- *Rear exterior spotlights*

**Check standard and optional features on pages 14-15 for model availability.*

P A I N T

Optional Full-Body Paint Packages



TWILIGHT FUSION
FW



EXTREME RED
FW



MYSTIC SAND
FW

Graphics

Standard Graphics Packages

GLAMIS SANDSTONE



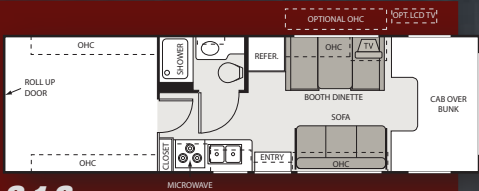
X-PACKAGE



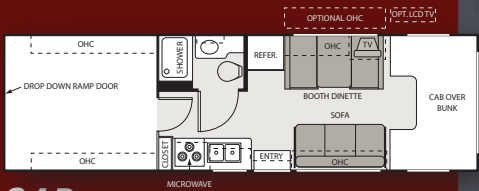
FIRESIDE GRANITE



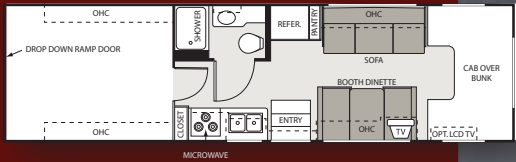
Floorplans



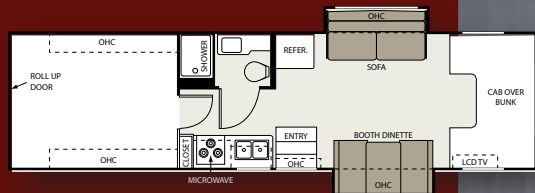
31C Available on Ford or Chevy/Workhorse chassis. Cargo area: 96" x 113"



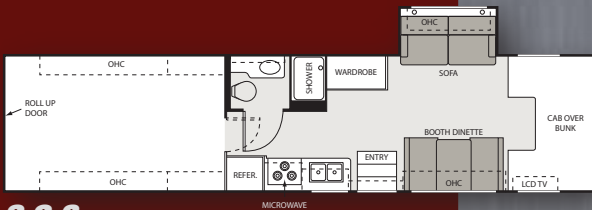
31D Available Ford or Chevy/Workhorse chassis. Cargo area: 96" x 113"



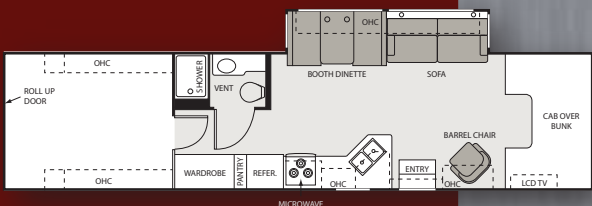
34D Available on Kodiak chassis. Cargo area: 96" x 120"



34C Available on Kodiak chassis. Cargo area: 96" x 120"



39C Available on F-750 chassis. Cargo area: 96" x 163"



39D Available on F-750 chassis. Cargo area: 96" x 120"

Fun Mover Features

BODY CONSTRUCTION EXTERIOR

Standard

- Fully welded tubular aluminum roof and sidewall cage construction
- Gelcoat fiberglass exterior (39C and 39D only)
- Seamless fiberglass exterior sidewalls (31C, 31D, 34C and 34D only)
- Seamless roto-cast storage compartments
- Choice of exterior vinyl graphics packages
- Premium one-piece TPO roof—Energy Star approved and labeled
- Laminex™ tread entry step
- Automatic electric entrance step
- Patio awning
- Roof hatch access with built-in ladder
- Exterior water hose with nozzle
- Fog lights (39C and 39D only)
- L.E.D. tail lights
- Patio lights

Options

- Full-body paint package (34C, 39C and 39D only)
- Slick fiberglass exterior (31C, 31D, 34C and 34D only)
- Fully automatic hydraulic leveling jacks (34C, 34D, 39C and 39D only)
- Electric awning (34C, 34D, 39C and 39D only)
- Observation deck (39C and 39D only; not available with air conditioner or Fantastic® fan on 39D)
- Rear exterior spotlights
- Auxiliary 60-gallon water tank with sprayer and water pump (39C and 39D only)
- Rear hitch bumper step (31C only)

AUTOMOTIVE/COCKPIT

Standard

- Ford E450 chassis with 6.8-liter Triton V10 gas engine and Torqshift transmission (31C and 31D only)
- Chevrolet C5500 Kodiak chassis with 8.1-liter Vortec V8 gas engine and Allison 1000 transmission (34C and 34D only)
- Ford F750 chassis with 7.2-liter Caterpillar C7 diesel engine, exhaust brake and Allison 3000 transmission, and air ride suspension (39C and 39D only)
- 10,000-lb. trailer hitch (34D, 39C and 39D only)
- 5,000-lb. trailer hitch (31C, 31D and 34C only)
- Wheel liners
- Power windows and door locks
- Deluxe exterior mirrors (31C only)
- Heated remote exterior mirrors (34C, 34D, 39C and 39D only)
- Heated leather driver and passenger seats (39C and 39D only)

- Convenient center console with cup holders and storage (34C, 34D, 39C and 39D only)
- Deluxe AM/FM stereo with compact disc player
- Generator start switch located on dash

Options

- Chevrolet/Workhorse chassis with 6.0-liter gas engine and Hydramatic 4L85E transmission (31C and 31D only)
- Chevrolet C5500 Kodiak chassis with 6.6-liter Duramax V8 diesel engine (605-lb. ft. of torque), with exhaust brake, Allison 1000 transmission and 5.5 KW Onan® diesel generator (34C and 34D only)
- Infiniss™ Leather driver and passenger seats (31C, 34C and 34D only; not available with Sport Package interior)
- Power driver's seat (31C and 31D Ford chassis only)
- Upgrade dash insert with drink tray (31C, 31D, 34C and 34D only; standard with optional Sport Package interior)
- Back-up monitor and camera
- Heated remote exterior mirrors (31C and 31D only)

INTERIOR

Standard

- Full 84" interior ceiling height (34C, 34D, 39C and 39D only)
- Residential linoleum throughout
- Metal entry grab handle
- 13,500 BTU roof air conditioner with solar panel in front
- Fluorescent lighting throughout (34C, 39C and 39D only)
- Oak cabinetry with raised panel upper cabinet doors and hidden hinges (not available with Sport Package interior)
- Hardware with Brushed Nickel finish
- Soft Touch vinyl ceiling (34C, 39C and 39D only)
- Day/night shades in living room
- Mini-blinds in kitchen
- Fabric jackknife sofa (31C, 31D, 34C and 34D only)
- Fabric hide-a-bed sofa (39C and 39D only)

Options

- Sports Package interior includes Granite laminate cabinetry, gray linoleum flooring, kitchen sink sprayer and carbon fiber dash insert with drink tray
- Cherry or Maple cabinetry (not available with Sport Package interior)
- Comfort Sleep electric sofa (39C and 39D only)
- Infiniss™ Leather sofa (31C, 31D and 34D only)
- Fabric hide-a-bed sofa (34C only)
- Infiniss™ Leather hide-a-bed sofa (34C, 39C and 39D only)
- Leather Euro recliner with ottoman (39D only)
- Glass shower door

GALLEY

Standard

- Double door refrigerator
- Convection microwave with 3-burner high-output gas range top
- Laminate countertops with large Stainless Steel sink (31C, 31D, 34C and 34D only)
- Solid surface countertops with matching sink/stove covers and large Stainless Steel double bowl sink (34C with Sport Package interior; 39C and 39D only)
- Flip-up countertop extension
- Single lever kitchen faucet with built-in sprayer (34C, 39C and 39D only)
- Full extension kitchen drawer guides

Options

- Raised refrigerator panels
- Fantastic® fan

ENTERTAINMENT

Standard

- 20" LCD television on electric swivel in cab-over (34C, 39C and 39D only)
- 14" flat screen television (31C, 31D and 34D only)

Options

- 20" LCD television on electric swivel in cab-over (31C, 31D and 34D only)
- Outside entertainment center with compact disc player, 110V and 12V outlets and antenna hook-up (31C, 31D, 34C and 34D only)
- AM/FM radio with compact disc player and two speakers in cargo area (31C, 31D, 34C and 34D only)
- AM/FM radio with compact disc player, two speakers in cargo area and two in exterior storage compartment (39C and 39D only)

- 20" LCD television in exterior storage compartment (39C and 39D only)
- In-motion, auto tracking satellite system (39C and 39D only)
- Home theater system with DVD player (not available with 14" flat screen television)
- DVD player
- Satellite dish

SAFETY/CONVENIENCE

Standard

- Entry door with deadbolt lock
- Telephone jack
- Smoke detector
- Fire extinguisher
- LPG detector
- Carbon monoxide detector
- LP fitting for exterior grill
- Heated holding tanks (34C, 34D, 39C and 39D only)

Options

- Convenience package: keyless entry, two-way radios and valve stem extenders
- Central vacuum system (34C, 34D, 39C and 39D only)
- Dual pane windows (34C, 34D, 39C and 39D only)
- Cold weather package (34C, 34D, 39C and 39D only)
- Heated holding tanks (31C and 31D only)

ELECTRICAL SYSTEMS

Standard

- Guardian RV Quietpack™ 40G generator (3600 watts) (31C and 31D only)
- Guardian RV Quietpack™ 55G generator (5500 watts) (34C and 34D only)
- Onan® RV Quiet™ diesel 8000 generator (8000 watts) (39C and 39D only)
- 30-amp service (31C and 31D only)
- 50-amp service (34C, 34D, 39C and 39D only)
- Detachable shore line power cord (34C, 34D, 39C and 39D only)
- 6-gallon DSI gas water heater (31C, 31D and 34D only)
- 10-gallon DSI gas/electric water heater (34C, 39C and 39D only)
- Water heater bypass system
- Battery disconnect switch
- Emergency start switch

Options

- Onan® RV Microquiet 4000 generator (4000 watts) (31C and 31D only)
- Guardian RV Quietpack™ 55G generator (5500 watts) (31C and 31D only)
- Onan® RV Marquis Gold™ 5500 generator (5500 watts) (31C, 34C and 34D only)
- 600-watt inverter (standard with electric garage door)

CARGO AREA

Standard

- White laminate overhead cabinets with hidden hinges
- Sealed bypass door
- Rubber flooring in cargo area
- Core-Trax™ tie down system
- Two 110V outlets
- 48" aluminum cargo ramp (31C only)
- 99-1/4" wide fold-down ramp door (31D and 34D only)
- Power aluminum liftgate with 18" extension (34C, 39C and 39D only)

Options

- Electric garage door with 600-watt inverter
- 13,500 BTU rear roof air conditioner (requires 5.5-KW generator on 31C and 31D; not available with observation deck on 39D or Fantastic® fan)
- Fantastic® fan (not available with observation deck on 39D or 13,500 BTU rear roof air conditioner)
- Electric drop-down bed (34C, 34D, 39C and 39D only)
- Rear cargo screen
- Two wheel chocks
- Two jackknife cargo sofas (not available on 31C and 31D, or with electric bed option)
- Diamond plate flooring

C5500 Kodiak chassis shown



Fun Movers built on the Chevrolet Kodiak chassis and Ford F750 chassis utilize the same basement construction as most high-end Class A motorhomes.

The basement frame construction consists of vertical steel framing that ties all horizontal cross members together for a true basement super structure.

This full cross member design provides a rigid foundation that spans the entire width of the motorhome. As a result, the chassis maintains its own structural integrity for many years. This means there

are less squeaks and rattles inside the motorhome as it gets older. Plus, the rigid construction allows you to carry heavier items in the basement storage compartments.

The Kodiak chassis offers a choice of an 8.1-liter Vortec® gasoline engine or 6.6-liter Duramax® diesel engine, with the Allison 1000 Series automatic transmission.

The rugged Ford F750 chassis is powered by a 7.2-liter Caterpillar C7 diesel engine with Allison 3000 series transmission and air ride suspension. This rugged model has a GVWR of 33,000-lbs. which means you can put your toys in the cargo area and tow one as well.



THE FOUR WINDS INTERNATIONAL QUALITY DIFFERENCE

What sets Four Winds International apart from other manufacturers? It's a better level of quality built in each motorhome from the inside out. It's exceptional value that is integrated into each design. It's a dedication to innovation that allows us to continually improve our motorhomes. Our ultimate goal is to build the right combination of quality, functionality and durability so you get many years of enjoyment from your new motorhome. It's a commitment we take seriously, and one on which you can depend.

Fun Mover Specifications

| MODEL | 31C | 31D | 34D | 34C | 39C | 39D |
|--|------------|------------|-----------|-----------|----------|----------|
| WEIGHT RATING (LBS.) | | | | | | |
| Ford Chassis | Triton V10 | Triton V10 | N/A | N/A | CAT 300 | CAT 300 |
| Gross Vehicle (GVWR) | 14,050 | 14,050 | N/A | N/A | 33,000 | 33,000 |
| Gross Combined (GCWR) | 20,000 | 20,000 | N/A | N/A | 60,000 | 60,000 |
| Chevrolet Chassis | Vortec V8 | Vortec V8 | Vortec V8 | Vortec V8 | N/A | N/A |
| Gross Vehicle (GVWR) | 14,050 | 14,050 | 19,500 | 22,000 | N/A | N/A |
| Gross Combined (GCWR) | 17,000 | 17,000 | 26,000 | 26,000 | N/A | N/A |
| MEASUREMENTS | | | | | | |
| Wheel Base | 211" | 211" | 241" | 253" | 298" | 298" |
| Exterior Length (without ladder) | 30'9" | 30'9" | 36' | 36' | 40'6" | 40'6" |
| Exterior Height (with air conditioner) | 11'1" | 11'1" | 12'11" | 12'11" | 12'5" | 12'5" |
| Interior Height | 80" | 80" | 84" | 84" | 84" | 84" |
| Awning Size | 19' | 19' | 15' | 18' | 19' | 19' |
| TANK CAPACITIES | | | | | | |
| Fuel Ford/Chevrolet (gallons) | 55/57 | 55/57 | -/80 | -/80 | (2) 50/- | (2) 50/- |
| LPG (pounds) | 41 | 41 | 96 | 96 | 110 | 110 |
| Fresh Water (gallons) | 23 | 23 | 50 | 50 | 60 | 60 |
| Waste Water (gallons) | 32 | 32 | 37 | 37 | 49 | 49 |
| Gray Water (gallons) | 36 | 36 | 37 | 37 | 49 | 49 |
| Water Heater (gallons) | 6 | 6 | 10 | 10 | 10 | 10 |
| Furnace (BTUs) | 25,000 | 25,000 | 30,000 | 30,000 | 30,000 | 30,000 |

VEHICLE LOADING

Every effort has been made to provide the greatest number of options for the recreation vehicle owner. Along with these choices comes the responsibility to manage the loads that are imposed by the choices so that they remain within the manufacturer's specified chassis weight limits. Do not overload the recreation vehicle.

DRY WEIGHTS

Based on standard features; optional equipment not included. Net carrying capacity (NCC) determined by subtracting unloaded vehicle weight (UVW) from gross vehicle weight, (GVWR) and includes fluids, options, and cargo. Liquid capacities and weights are approximations only.

Product information, specifications, and photography in this brochure were as accurate as possible at time of printing. Photographs may contain some features that are optional on your vehicle. Since we continually strive to improve our products, actual products may differ. Prices and specifications are subject to change without notice. All capacities are approximate and dimensions are nominal. Some features or options may be different or unavailable in Canada.

WARNING

This information is intended as a guide only. Weights of individual vehicles may vary. Consult your owner's manual for complete loading, weighing, and towing instructions.

IMPORTANT

Towing capacity may vary by chassis model, floorplan, options and loading of the vehicle. This may result in a towing capacity which is less than the maximum capacity of the hitch. Do not exceed the vehicle's Gross Combined Weight Rating (GCWR), or the hitch rating. A separate functioning brake system is required for any towed vehicle or trailer weighing more than 1,000 lbs. (450 KG) when fully loaded.

THE DIFFERENCE IS CLEAR

At Four Winds International (FWI), we strive to go beyond your expectations with every motorhome we build. By doing so, you will be able to enjoy a better quality of life while on the road.

All FWI motorhomes come with a full one-year, 15,000 mile bumper-to-bumper warranty, as well as a three-year, 45,000-mile limited structural warranty. Our nationwide dealer network is fully equipped and trained to meet your service needs. The FWI support staff has many years of experience, and is available to provide assistance on all technical, service and warranty issues. For complete warranty details, contact your Four Winds International dealer.

FWI is proud to offer high-quality products and support services that result in customer satisfaction—one customer at a time. So whether you are a first-time recreational vehicle owner, or an experienced one, we're confident that you'll enjoy years of adventures in your new motorhome. This is the Four Winds International difference.

WHY THOR IS YOUR BEST RV VALUE

Thor Industries, Inc., listed on the New York Stock Exchange (THO), proudly traces its history back over 70 years to the pioneering days of the recreational vehicle industry with the founding of Airstream, the industry's oldest and most renowned brand. Our total commitment to quality and our philosophy of putting our customers first has led to our continuous growth.

Today, Thor is the largest builder of recreational vehicles. Thor's strong financial condition and years of solid growth are your assurance that we will be here to serve you for years to come. We think this extra peace of mind is important when you are making a significant investment. Because our customers are always #1 with us, we work harder than other manufacturers to satisfy you.



© 2006 Four Winds International Litho USA 1006-35M



P.O. Box 1486 • Elkhart, Indiana 46515-1486

Phone: 574-266-1111 • Fax: 574-294-8971

www.fourwinds-rv.com