



THOR  
MOTOR COACH

# Siesta

**CLASS B+(PLUS) MOTORHOME SPECIFICATIONS**





27SB FLOORPLAN / GLAZED CHERRY WOOD / MILANO BROWN DÉCOR



AUTUMN MAPLE PARTIAL PAINT



MILANO BROWN



SIZZLE GREY II



SATIN CREAM FULL BODY PAINT



URBAN STEEL



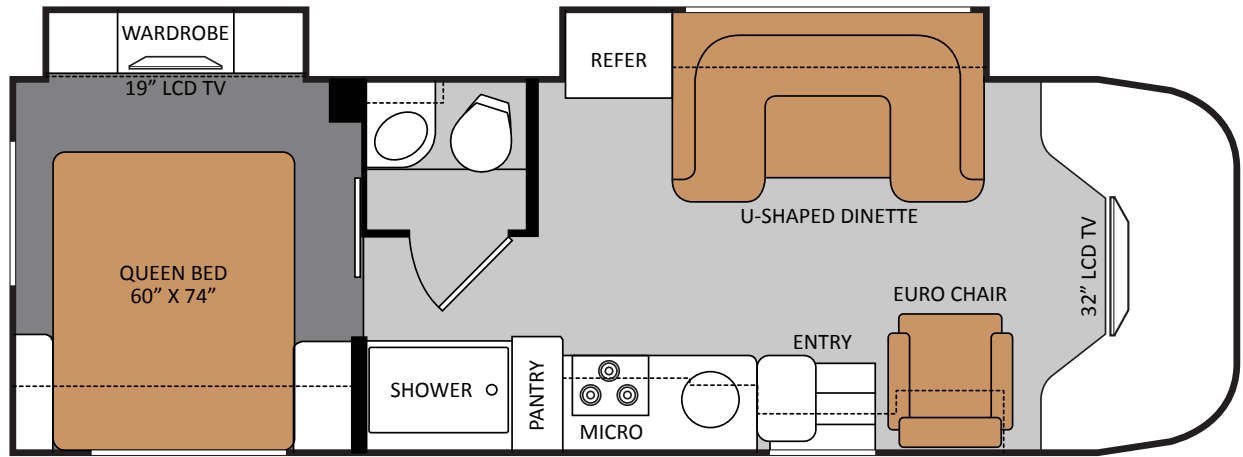
GLAZED CHERRY



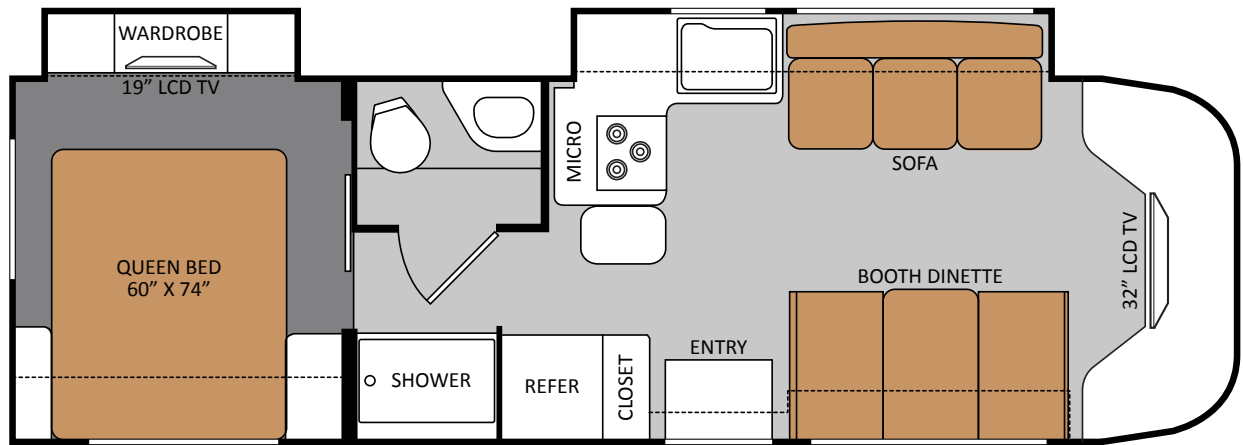
GLAZED MAPLE



SILVER STORM FULL BODY PAINT



**27SB**



**29GB**

MODEL	27SB	29GB
Chassis	FORD	FORD
Gross Vehicle Weight Rating (GVWR)	14,500	14,500
Gross Combined Weight Rating (GCWR)	22,000	22,000
Wheel Base	206	220
Exterior Length (without ladder)	29'-9"	31'-7"
Exterior Height (with air conditioning)	10'-6"	10'-6"
Exterior Width (without mirrors)	94"	94"
Interior Height	80"	80"
Awning Size (manual/electric)	14'/16'	16'/16'
Fuel (gallons)	55	55
LPG (pounds)	40.9	40.9
Fresh Water (gallons)	40	40
Grey Water (gallons)	32	32
Waste Water (gallons)	25	25
Water Heater (gallons)	6	6
Furnace (BTUs)	25,000	25,000
Exterior Storage Capacity (cubic feet)	50.1	56.3

**IMPORTANT - PLEASE READ:** Information published within this brochure reflects product design, fabrication, material, components and specifications at the date of printing. If your vehicle was manufactured before this brochure was published this information may not be accurate because vehicles assembled before the brochure was published may not have the same design, fabrication, materials, components and specification as represented in the brochure. If your vehicle was manufactured after this sales brochure was published the representations may not be accurate because, for product improvement reasons, we reserve the unilateral right, at any time, without prior notice, to make changes in product design, material, components and specifications. The date the brochure was published [i.e. "Julian date"] is set forth on the last page of the brochure. IF CERTAIN INFORMATION PUBLISHED WITHIN THIS BROCHURE IS SIGNIFICANT TO YOUR PURCHASING DECISION, PLEASE CONSULT WITH YOUR SELLING DEALERSHIP TO CONFIRM THAT THE INFORMATION IS ACCURATE WITH RESPECT TO THE VEHICLE YOU ARE CONSIDERING PURCHASING. Photographs in the brochure may depict optional equipment or may only be available in certain floor plans. We reserve the right to make changes in prices and models and to discontinue models without notice or obligation. Components, appliances and the chassis may have been manufactured in a calendar year before the vehicle's designated model year. All capacities are approximate. The actual length of the vehicle may differ from that indicated in the brochure due to variances in the manufacturing processes and/or installed components. All dry weights are based on standard model features and do not include optional features or equipment. Components, appliances and features may differ to conform to local codes. Due to EPA environmental restrictions, engine power and torque ratings may change during any model year. The Thor Motor Coach logo and its design are registered trademarks. Other products and company names are trademarks and/or registered trademarks of their respective manufacturer. While the color of the motorhome's exterior and the interior fabrics depicted in this brochure are fair and reasonable depictions, the colors depicted may not be exact match of the actual colors because of variances in photo processing and printing. Component part and appliance manufacturers issue limited warranties covering portions of the vehicle not covered under the limited warranty we issue. To learn specific details regarding warranty coverage please consult your selling dealership or review the warranty packet inside the vehicle.

# STANDARD FEATURES AND OPTIONS

## CONSTRUCTION & EXTERIOR

- Slick fiberglass exterior sidewalls
- One-piece fiberglass front and rear caps
- Exterior graphics with partial paint package
- Seamless roto-cast storage compartments
- Mega-storage to be covered in linoleum
- Manual patio awning
- Slide-Out room awning
- Roof ladder
- Outside shower

## CONSTRUCTION & EXTERIOR OPTIONS

- Full-body paint package with Gel-coat sidewalls

## AUTOMOTIVE & COCKPIT

- AM/FM Dash radio with oversized buttons, CD player and weather band tuner
- Driver and passenger air bags
- Keyless cab entry
- Valve stem extenders
- Heated remote exterior mirrors
- Fiberglass running boards
- Stainless steel wheel liners
- 5,000 lb. trailer hitch with 7-pin round connector
- Leatherette driver and passenger captain's chairs
- Back-up monitor

## AUTOMOTIVE & COCKPIT OPTIONS

- Side vision cameras
- Spare tire kit
- Power driver's seat

## INTERIOR

- Residential linoleum throughout (kitchen, living room and bath)
- Windshield privacy curtain
- 13,500 BTU low-profile air conditioner in front
- Directional reading lights
- Hardware with oil rubbed bronze finish

- Night shades
- Booth dinette with dream dinette table mechanism (29GB Only)
- Leatherette u-shaped dinette (27SB Only)
- Leatherette euro-recliner with ottoman (27SB Only)
- Leatherette jackknife sofa (29GB Only)

## INTERIOR OPTIONS

- Fantastic fan
- 15,000 BTU low-profile air conditioner in front

## KITCHEN

- Double door refrigerator
- 3-burner high-output gas cooktop with cover
- 30" OTR microwave
- SurfX® laminate countertops
- Flip-up countertop extension
- Large double bowl sink
- Pantry
- Full extension drawer guides

## KITCHEN OPTIONS

- Solid surface countertop: kitchen, sink covers and dinette

## ENTERTAINMENT

- Front entertainment center with 32" LCD television in cab-over and remote control
- 19" LCD television in bedroom
- DVD player
- Coach radio system with CD player
- Exterior speakers wired to coach radio
- Television switch box, antenna and booster
- Cable television prep
- HD/DSS satellite prep

## BEDROOM & BATHROOM

- Queen size bed
- Bedspread and pillow shams
- Directional reading lights

- Power bath vent
- China bowl toilet
- Rectangular shower with glass door

## SAFETY & CONVENIENCE

- Entry door with deadbolt lock
- Systems control center
- Smoke, LPG, carbon monoxide detectors
- Fire extinguisher
- Black tank flush system

## SAFETY & CONVENIENCE OPTIONS

- Child safety seat tether anchor in dinette

## ELECTRICAL & PLUMBING

- Onan RV MicroQuiet™ 4.0 (4000-kilowatts) gas generator
- Automatic generator transfer switch
- 30 amp service with shore line power cord
- Battery disconnect switch
- Emergency start switch
- Auxiliary house battery
- Water heater bypass system
- 6-gallon gas/electric water heater

## ELECTRICAL & PLUMBING OPTIONS

- Holding tanks with heat pads
- Second auxiliary house battery



*Siesta*



SCAN THE QR CODE WITH YOUR SMART PHONE

YOUR LOCAL TMC DEALER:



Go RVing.

P.O. BOX 1486 • ELKHART, IN 46515 • CUSTOMER SERVICE: 877-855-2867 • SALES DEPARTMENT: 800-860-5658 • [SIESTA-RV.COM](http://SIESTA-RV.COM)

COPYRIGHT THOR MOTOR COACH, INC. © 2011 (12/2011)

