

FOUR WINDS AND FOUR WINDS FIVE THOUSAND
Class C Motorhomes

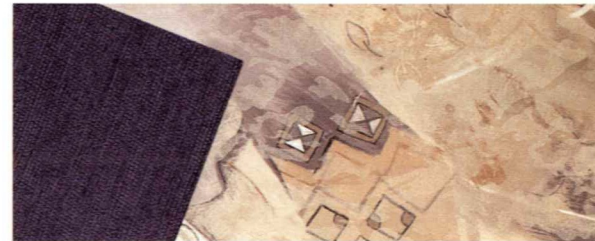


Four Winds

The Four Winds slideout floorplan offers a generous amount of living room space for more comfort. As an added convenience, we've built overhead cabinets in the slide room for additional storage. This year we've added an additional floorplan to our line-up with the new 23J Four Winds Five Thousand. Easy to operate, Four Winds' slideouts are built for reliability and long life.



FOUR WINDS INTERIORS



ARCHER BLUE



ADELPHI GREEN



ARCHER TAUPE



The Four Winds impressive exterior storage features Roto-Cast® storage compartments. These seamless compartments virtually eliminate the possibility of water intrusion. This proven technology also provides a quiet, strong and insulated storage area for all your valued belongings.



Class C

FOUR WINDS

Affordable Luxury

Four winds, where the highest in standards match the highest of value.

For many years, Four Winds has been regarded as a major force in the field of motorhome manufacturing. This is due to our commitment for providing intelligent designs paired with a certain knowledge... "To be successful one must provide true value for the dollar." Four Winds' goal has always been to provide superior value in grand fashion.

From the unique floorplans to the crisp exterior appeal, the Four Winds is an exercise in rethinking the role of size, value and total cost for one valued customers. No motorhome on the market can match the standard features and amenities found in the Four Winds and you will be hard pressed to find another company that will match our total commitment.



Class C

FOUR WINDS



Four Winds *Five Thousand*

Like the Four winds, the Four Winds Five Thousand offers state-of-the-art technology which gives them their superior edge in ride, handling, stability, comfort and convenience. The Four Winds Five Thousand is the perfect vehicle for those who prefer a motorhome shorter in length with greater economy.

The bathrooms are carefully designed for maximum efficiency and convenience, with generous storage and complete privacy.



Most of the bedrooms feature island queen beds with matching bedspreads and window treatments. For extra storage convenience, the bed frames are fitted with gas lift-struts for easy access to the valuable under bed storage compartment.

Four Winds Class C

Standard Features

Construction/Exterior

- 1 1/2 x 1 1/2", 16 gauge steel welded floor system
- Factory-installed awning
- Factory-installed hitch
- Full rear frame extension, engineered to maintain structural integrity and towing efficiency
- Fully-insulated ceiling ducted air conditioning and in-floor residential-style heating
- Fully laminated roof, walls and floors incorporating energy-saving high-density block foam insulation
- Fully-welded tubular aluminum roof and sidewall cage construction
- Heated and enclosed Roto-cast® holding tanks
- Large pass-through exterior storage compartment
- Patented E.M.T. system which is a rubber mounting suspension system on the chassis that absorbs and isolates road vibration for a smoother ride
- Premium one-piece rubberized roof
- Seamless roto-cast® storage compartments
- Seamless fiberglass exterior sidewalls
- Widebody design

Standard Features

Appliances

- 13,500 BTU ducted roof air conditioner (front)
- Aluminum running boards
- Cable TV hook-up
- Coleman direct cool air conditioner
- Electronic ignition water heater w/standard water heater bypass kit
- Fully-equipped galley which includes: a double-door refrigerator, high-output 3-burner gas range w/oven, residential-style microwave and high-quality roller guides on all drawers
- Generator
- Name brand appliances
- Premium digital AM/FM cassette stereo

Comfort/Convenience/Safety

- Bedroom TV cabinet
- Deluxe exterior mirrors
- Easy-access flip-up storage sofa
- Front TV Cabinet (n/a w/entertainment center)
- Innerspring mattress with comforter
- LP leak and CO detectors
- Radius corner entry door & compartment doors
- Residential linoleum (galley area)
- Rubber tread entry steps
- Spacious overhead cabinetry w/ raised oak doors
- User-friendly hook-ups conveniently grouped in the driver side rear section on most models

Four Winds Class C

Options

- 13" color TV w/remote (front w/swivel)
- 13" color TV w/remote (bedroom)
- 4.0 KW Onan® generator
- Automatic electric step
- Barrel chairs, P.S. (31' only)
- Battery disconnect
- Convection microwave w/3-burner range top
- Day / Night shades throughout
- Deluxe AM/FM stereo with CD player
- Emergency start
- Entertainment Center w/25" TV & slide out bunk (n/a on diesel 31')
- Ford diesel engine (n/a 31S)
- Heated, remote exterior mirrors
- Outside entertainment center
- Outside shower
- Power windows and locks
- Propane generator conversion
- Skylight (std. on 31N)
- Twin beds with nightstand (31' models only)
- Twin beds with wardrobe (28' only)
- Video cassette recorder
- Wheel liners

FOUR WINDS FIVE THOUSAND

Class C

Four Winds Five Thousand Class C

Standard Features

Construction/Exterior

- 1 1/2 x 1 1/2", 16 gauge steel welded floor system
- Factory-installed awning
- Full rear frame extension, engineered to maintain structural integrity and towing efficiency
- Fully laminated roof, walls and floors incorporating energy-saving high-density block foam insulation
- Fully-welded tubular aluminum roof and sidewall cage construction
- Large pass-through exterior storage compartment (26' & 28' only)
- Long limousine-style wheel base for a smooth and safe ride
- Patented E.M.T. system which is a rubber mounting suspension system on the chassis that absorbs and isolates road vibration for a smoother ride
- Premium one-piece rubberized roof
- Radius-corner entry door
- Seamless roto-cast® storage compartments
- Seamless fiberglass exterior sidewalls
- Widebody design

Standard Features

Appliances

- 13,500 BTU roof air conditioner (front)
- Electronic ignition water heater w/standard water heater bypass kit
- Fully-equipped galley which includes: a double-door refrigerator, high-output 3-burner gas range, residential-style microwave and high-quality roller guides on all drawers
- Name brand appliances
- Premium digital AM/FM cassette stereo

Comfort/Convenience/Safety

- Bedroom TV cabinet (26' & 28' only)
- Front TV Cabinet (n/a w/entertainment center)
- LP leak and CO detectors
- Mattress with comforter
- Rubber tread entry steps
- User-friendly hook-ups conveniently grouped in the driver side rear section on most models
- Seatbelts throughout
- Spacious overhead cabinetry
- Windshield Privacy curtain

Four Winds Five Thousand Options

- 13" color TV w/remote (front w/swivel)
- 13" color TV w/remote (bedroom)
- 4.0 KW Onan® generator
- 5.0 Generac generator
- Additional bifold door (hallway)
- Aluminum running boards
- Automatic electric step
- Battery disconnect
- Convection microwave w/3-burner range top
- Day/Night shades throughout
- Deluxe exterior mirrors
- Deluxe AM/FM CD player
- Emergency start
- Entertainment center w/19" TV & slideout bunk
- Entertainment center w/25" TV & slideout bunk (23' only)
- Heated holding tanks
- Hitch
- Outside entertainment center (n/a 21RB)
- Oven w/3 burner H.O. range top
- Power windows and locks
- Raised oak doors
- Skylight
- Twin beds w/wardrobe (26' & 28')
- Video cassette recorder

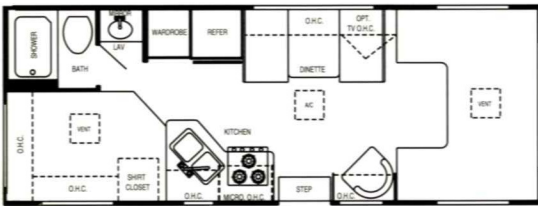
21RB



22RK



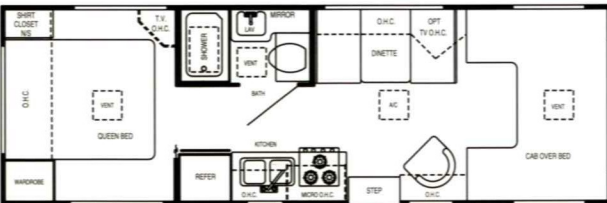
23A



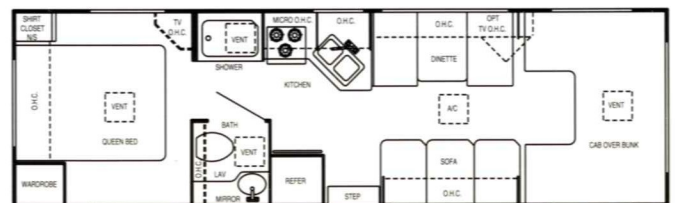
23J



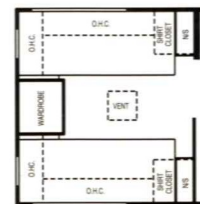
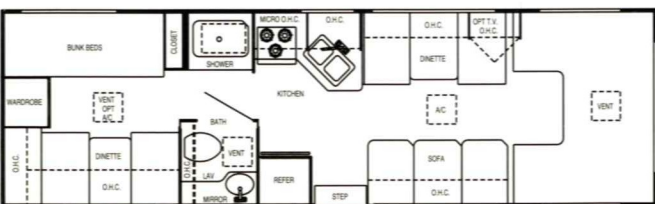
26Q



28A

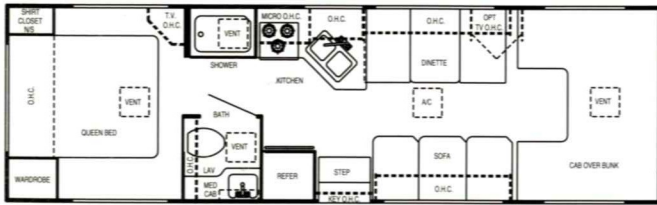


28D

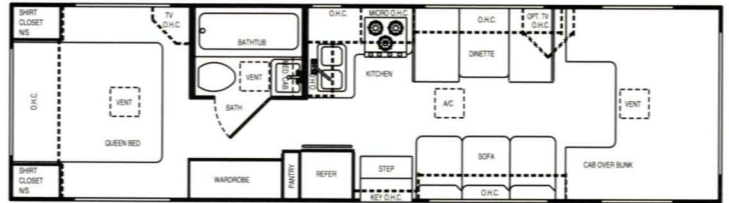


Twin Bed
Option
(28' only)

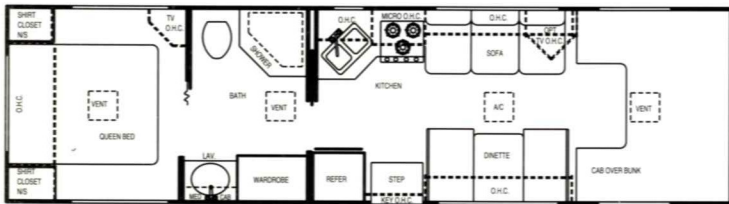
28A



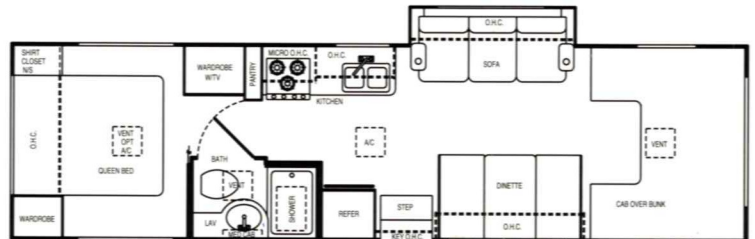
31QSB



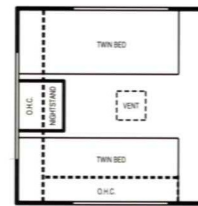
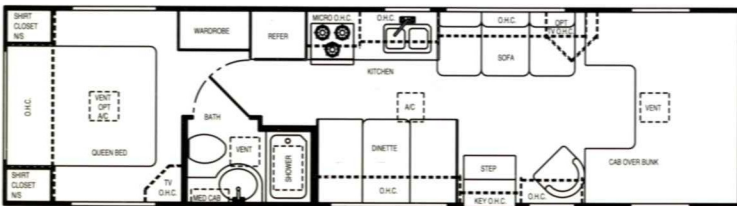
31N



31S



31Z



**Twin Bed
Option
(31' only)**

2000 Four Winds Class C	Four Winds Five Thousand							Four Winds				
	21RB	22RK	23A	23J	26Q	28A	28D	28A	31N	31QSB	31S	31Z
Ford Engine	-	6.8L	6.8L	6.8L	6.8L	6.8L	6.8L	6.8L	6.8L	6.8L	6.8L	6.8L
Wheel Base	-	174"	158"	180"	176"	190"	190"	190"	208"	208"	218"	216"
GVWR	-	11,500	11,500	14,050	11,500	14,050	14,050	14,050	14,050	14,050	14,050	14,050
GAWR (Front)	-	4,600	4,600	4,600	4,600	4,600	4,600	4,600	4,600	4,600	4,600	4,600
GAWR (Rear)	-	7,800	7,800	9,450	7,800	9,450	9,450	9,450	9,450	9,450	9,450	9,450
UVW	-	9,565	9,655	10,930	10,260	10,800	10,935	11,380	11,755	11,650	12,390	12,200
GCWR	-	18,500	18,500	20,000	18,500	20,000	20,000	20,000	20,000	20,000	20,000	20,000
NCC	-	1,935	1,845	3,120	1,240	3,250	3,115	2,670	2,295	2,400	1,660	1,850
Chevy Engine	5.7L	-	5.7/7.4L	-	5.7/7.4L	7.4L	7.4L	-	-	-	-	-
Wheel Base	138"	-	159"	-	177"	191"	191"	-	-	-	-	-
GVWR	11,500	-	11,500/ 12,300	-	11,500/ 12,300	12,300	12,300	-	-	-	-	-
GAWR (Front)	4,300	-	4,300	-	4,300	4,300	4,300	-	-	-	-	-
GAWR (Rear)	8,250	-	8,250/ 8,600	-	8,250/ 8,600	8,600	8,600	-	-	-	-	-
UVW	8,560	-	8,915/ 9,700	-	9,930/ 10,100	10,420	10,615	-	-	-	-	-
GCWR	13,500	-	13,500/ 17,000	-	13,500/ 17,000	17,000	17,000	-	-	-	-	-
NCC	2,940	-	2,585/ 2,600	-	1,570/ 2,200	1,880	1,685	-	-	-	-	-
Exterior Length (w/o ladder)	22'3"	23'6"	24'5"	24'8"	27'4"	29'4"	29'4"	29'2"	31'7"	31'0"	32'1"	32'3"
Exterior Height w/ A/C	10'8"	10'8"	10'8"	10'10"	10'8"	10'8"	10'8"	11'6"	11'6"	11'6"	11'6"	11'6"
Exterior Width	99"	99"	99"	99"	99"	99"	99"	99"	99"	99"	99"	99"
Interior Width	96"	96"	96"	96"	96"	96"	96"	96"	96"	96"	96"	96"
Interior Height	79 3/4"	79 3/4"	79 3/4"	79 3/4"	79 3/4"	79 3/4"	79 3/4"	79 3/4"	79 3/4"	79 3/4"	79 3/4"	79 3/4"
Awning Size	12'0"	13'0"	15'0"	15'0"	13'0"	14'0"	14'0"	14'0"	16'0"	16'0"	16'0"	16'0"
Fuel Ford/Chevy (Gal.)	-/35	55/-	55/55	55/-	55/55	55/55	55/55	55/-	55/-	55/-	55/-	55/-
LPG (Pounds)	51	51	51	51	51	51	51	51	51	51	51	51
Fresh Water (Gal.)	29	29	41	26	41	41	41	41	41	41	41	41
Waste Water (Gal.)	22	21	22	25	25	25	25	30	30	30	30	30
Gray Water (Gal.)	21	21	21	25	20	21	21	35	35	35	35	35
Furnace BTU's	25,000	25,000	25,000	25,000	31,000	31,000	31,000	31,000	31,000	31,000	31,000	31,000

Product information, specifications and photography in this brochure were as accurate as possible at time of printing. Since we continually strive to improve our products, actual products may differ. Prices and specifications are subject to change without notice. All capacities are approximate and dimensions are nominal. Some features or options may be different or unavailable in Canada.

Vehicle Loading-Every effort has been made to provide the greatest number of options for the recreation vehicle owner. Along with these choices comes the responsibility to manage the loads that are imposed by the choices so that they remain within the manufacturer's specified chassis weight limits. Do not overload the recreation vehicle.

Dry weights based on standard features; optional equipment not included. Net carrying capacity (NCC) determined by subtracting unloaded vehicle weight (UVW) from gross vehicle weight (GVWR) and includes fluids, options and cargo. Liquid capacities and weights are approximations only.



Most models are designed to be manufactured on either a Ford Motor Company or General Motors Chassis. Both chassis' are designed to fully utilize the Four Winds patented E.M.T. (Energy Mount Transfer System.) This proven innovation in chassis design completely isolates the body of the motorhome from the chassis by utilizing a series of carefully placed, heavy-duty, high performance rubber grommets. The E.M.T. system increases road comfort and stability and improves road handling, while virtually eliminating the transfer of vibration and road noise to the interior of the coach. This unique system is another example of Four Winds' state-of-the-art technology and superior design and construction.

YOUR LOCAL DEALER

THOR'S "2 + 2" WARRANTY

2 year limited structural warranty and 2 years on major components



This brochure is printed on recycled paper as part of Thor's corporate effort to minimize waste and conserve our natural resources. We know you will join us in this effort to maintain North America's great outdoors. For who appreciates the natural beauty of our open spaces more than an RV'er?



FOUR WINDS INTERNATIONAL

P.O. Box 1486 • Elkhart, IN 46515-1486

(219)266-1111 • Fax (219)294-8971

www.fourwinds-rv.com