



greatest name in the great outdoors!



new 1967



camping trailers
CATALOG

**The first big
national brand-name
in camping trailers
is**



Only Coleman, with its more than 66 years' experience in creating better products for outdoor living, brings you the excellence found in every feature of eight new CT-1 camping trailers. They were developed by the same know-how, skill and painstaking craftsmanship that have made the Coleman Lantern and Camp Stove the world's best sellers.

Now at last, with the new CT-1's, you can have a camping trailer of *guaranteed premium quality* throughout—from the easy-up tops to the easy-ride torsion bar suspension and premium tires. You're assured of advanced automotive styling to match and enhance the modern lines of your car . . . more years-ahead features for convenience and safety . . . touches of elegance, high-fashion and down-right comfort to pamper you and your family during and after the most active day in the great outdoors. You can feel confident, too, that, should your CT-1 need service—even years from now—Coleman Authorized CT-1 Service is coast to coast.

Only the new CT-1's—tested East, North, South and West under all kinds of road and weather conditions—bring you so many years-ahead features—so much enduring quality! In the following pages, read why *COLEMAN is your best value.*

Coleman brings you a whole new world of camping pleasure in the

Coleman CT-190

Deluxe Aluminum HARD-TOP

- 125 square feet of full-comfort living space inside
- Sleek automotive styling outside
- Exclusive features throughout for years of beauty, convenience and safety
- Luxurious sleeping for 8 on 3" polyfoam mattresses
- Swing-out BAY WINDOW GALLEY
- Spacious convertible LOUNGE-BED
- 6'8" wide—12' long—20' long open

Do you have a large family? Do a lot of entertaining? Or want home-like comfort and space wherever you go? Choose the all-new, distinctively different CT-190!

Within *minutes* after you arrive at your campsite, the CT-190 can be completely set up. In fact, Dad—or even Mom—can put up the CT-190 alone. It's all because Coleman engineering has made it possible for the once arduous, time-consuming job to be done mostly from the outside. The secret? A uniquely simple mechanism that does the work of raising the sturdy Hard-Top for you. The bedroom wings (the beds can already be made up) *slide* out easily on nylon blocks . . . the bed bows over the bedroom wings are pushed into taut position—and it's all up.

Now, swing down the step door, with self-supporting legs—and there's the most elegant doorway a trailer ever had: the step is covered with an attractive, easy-to-clean mat. It's so *inviting*. Moments more and the aluminum screen door is in place . . . the Bay Window Galley and Coleman ice chest are conveniently at counter-height . . . and the extra-long folding-leg dinette table is ready to serve 5 or 6 in comfort.

One reason: Coleman's unique floor plan. The CT-190 has an extra-large Lounge-Bed that can seat 4. Another large Lounge-Bed gives more seating. Notice that, with more built-in "extras" for comfort and convenience, the CT-190 still has plenty of walk-around room.

\$ 1495.00



Instant Bay Window Galley—easily swings outboard into huge bay window area. 2-burner LP-Gas stove with controls . . . porcelain sink and pump, plus a pair of 3-gallon plastic water storage bottles . . . large work space. Finished in gleaming laminated plastic top, decorative wood finishes throughout.

2 Lounge-Beds—with reversible cushions for quick-change interior decorating! Rich warm tan one side . . . stunning floral pattern on the other. Fitted covers are durable long-life textured vinyl.

17 cubic feet of storage space under Lounge-Beds, more in galley!

Coleman Ice Chest positioned on combination ice chest holder, storage cabinet or decorative space for concealed chemical toilet.

Exclusive swing-down Step Door is lockable, has support legs, and is matted for easy cleaning.

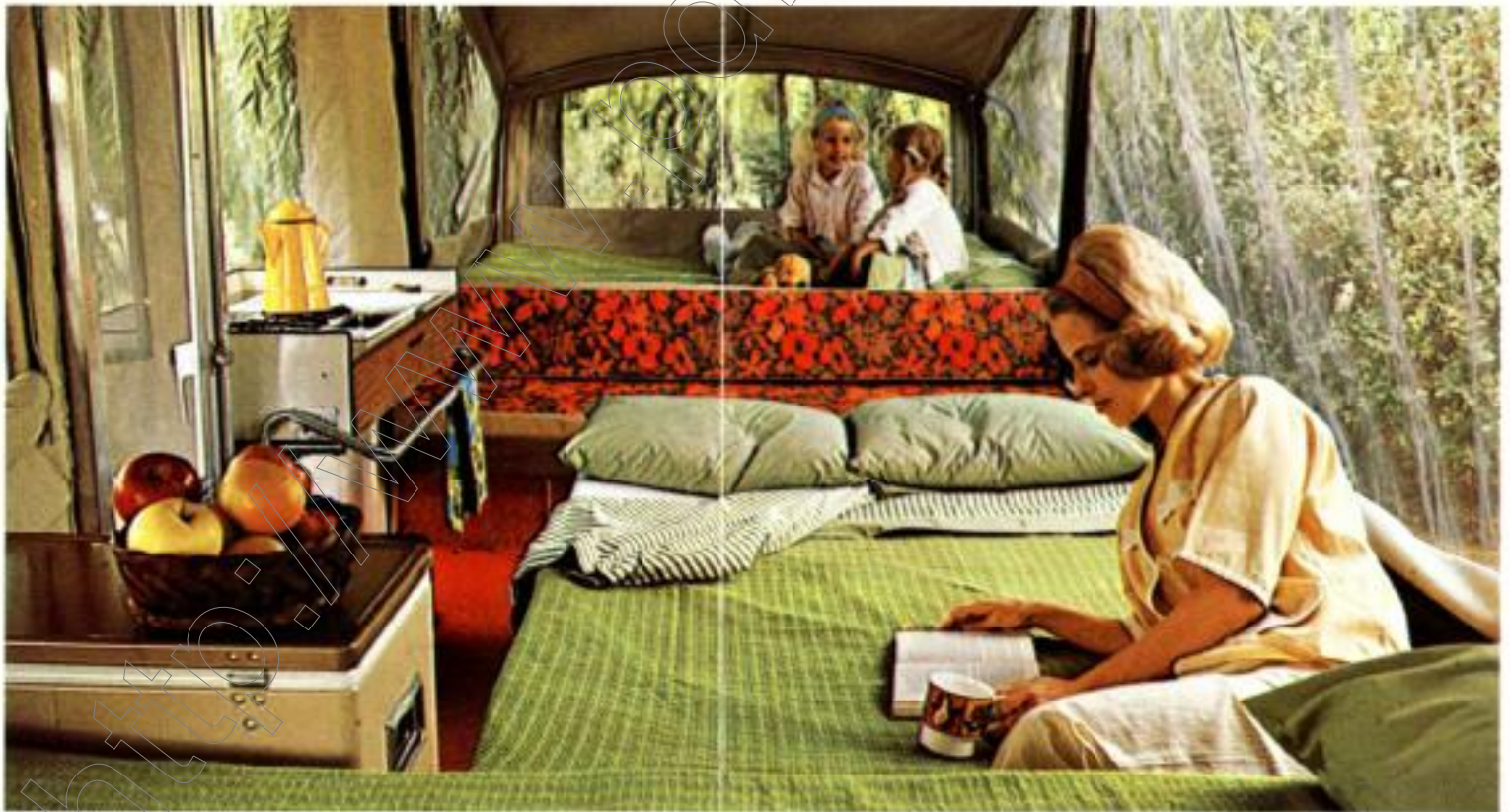
Rear Storage Trunk is lockable, holds spare tire, fishing tackle, life jackets, tools, flares, etc.

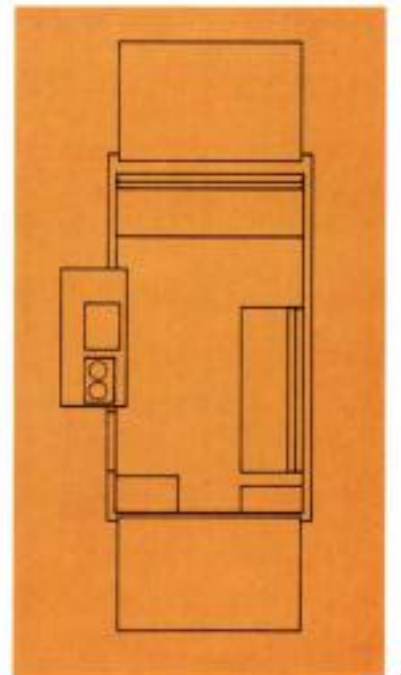
Spacious interior glows with inviting warmth . . . carefully planned for utmost comfort and convenience. Decorator-inspired colors, textured vinyl fabrics, wood interior finishes and plush red nylon carpeting. Easy to keep "clean as new" looking. Ample walk-around space by day, abundant sleeping accommodations by night. Spacious high arch construction over bedroom wings gives twice the headroom of other trailers. Hard-Top has insulative and sound deadening white vinyl headliner.

Windows in bedroom wings, because of slanted walls, can remain open during rain. Screening is of long-lasting vinyl-sealed fiberglass.

LP-Gas Heater—complete with vent, 8000 BTU input.*

*Optional





CT-1 Safety Engineered Features

Tires—Greater capacity, up to 11% wider than standard tires.* Give greater "floatation" in sand and mud, cushion ride over rough roads and rocky terrain.



Torsion bar independent wheel suspension on all CT-1's. Greater road stability, smoother ride over rough roads and wilderness terrain.

Hitch—Safety Lock hitch mates to 1 7/8" ball. Two steel safety chains.

Wide Track—all CT-1 models have road-hugging 64" wide track.*

High Speed—Timken tapered roller bearings allow travel at all speeds.

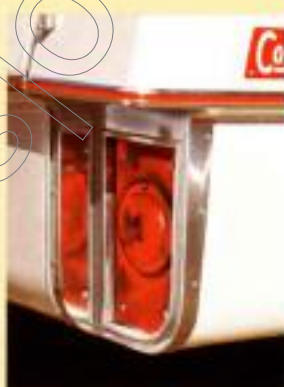


Exclusive Inter-locked Frame—heavy steel frame members are not only welded, they are *interlocked* to each other. Even without welds, frame cannot shift;

reduces possibility of "wrecking" to a minimum.

Colors—High contrast colors mean greatest visibility under all kinds of conditions.

Oversize Tail-lights—largest camping trailer reflector tail-lights in the industry. Meet Class A SAE requirements. Give greater range of visibility from rear and from sides. Adjacent body wall is at right angles to reflector light, similar to ship's "running" lights. All functions—stop, turn and tail-light—are performed by two huge lights.



Height—low profile means full visibility over the top of closed trailer from inside of towing auto.

*Except CT-160 and CT-161

Let yourself go...
Take a Coleman Holiday in the

Coleman CT-180 Aluminum HARD-TOP

- 100 square feet of living space!
- Luxurious Sleeping for 6 on 3" polyfoam mattresses.
- BAY WINDOW GALLEY
- Spacious LOUNGE-BED
- 6'8" wide * 8'9" long * 16' long open

The CT-180 has the years-ahead engineering, conveniences and comfort styling of the CT-190, yet is shorter, more compact—although larger than standard camping trailers. It has one extra-long lounge-bed—which quickly converts to a large bed. Imagine the luxury of *stretching* out on this generous-sized bed...softly cushioned by a premium quality 3" thick polyfoam mattress. Enormous Breeze-Panels on every side for cool night breezes, plenty of moonlight and blissful star-gazing. The opened Lounge-Bed sleeps two adults comfortably...and so do the two slide-out double beds (which can always be made up, ready for the sleepy camper). In every way, the CT-180 is perfect for the medium-to-large-size family, sleeping or dining.

The CT-180's Galley is the big Formica-and-wood-veneer finished console that swings up and out into the Bay Window. And Mom will also love the Coleman Ice Chest, and the 63 cubic feet of storage space. As in the larger CT-190, there's plush red nylon carpeting throughout the floor area—and easy-cleaning matting on that distinctive front Step Door! Luxury under-foot—and overhead, too. The 6'6" high ceiling is washable vinyl. What's more, between the ceiling and Hard-Top roof, there's insulation to cool the sun's rays even on the hottest days. And on cool days, you keep warm with the optional LP-Gas heater! You see—Coleman has thought of your comfort from top to floor—no matter what the weather! In fact, once you have the incomparable new CT-180, your family will want to *live* in it every weekend—and when vacation time comes, you can really let yourselves go—on the most memorable holiday you've ever had—a Coleman CT-1 Holiday!

Model CT-181—diff the deluxe features of the CT-180 except no Bay Window Galley or Ice Chest.



The New Coleman CT-1's are Fastest, Easiest to Erect!

Easy—one-person set-up completely from the outside—in minutes!

1. Built-in trailer leveling supports adjust to desired length.
2. Exclusive spring-loaded, counter-balanced mechanism **RAISES HARD-TOP** for you.
3. Bedroom Wings slide out on nylon bearing blocks. Leveling support legs adjust to irregular terrain — even a dip or grade. Beds can remain made, ready for use.
4. Step Door swings down to form step, aluminum screen door* locks in place.
5. Galley** swings outboard to form Bay Window area.
6. Coleman Ice Chest positioned on combination ice chest holder, storage cabinet or decorative space for concealed chemical toilet.**

*Not on Models CT-160 and CT-161.

**Models CT-190, CT-180, CT-170, CT-160 only.

Handsome Hard-Top is aluminum with chip- and mar-resistant vinyl finish. White ceiling is easy to keep clean and new-looking.

Heavy-Duty canvas is mildew-resistant, preshrunk and mineral-dry treated to repel moisture.

Big Breeze-Panels, standard on all CT-1's, are vinyl-sealed lifetime fiberglass netting, dark in color.

Aluminum screen storm door is standard equipment, installs in seconds, locks from inside.

White high-lustre vinyl body finish, bonded to the aluminum at the mill, is chip-, scratch- and mar-resistant. Stays shiny-new looking years longer.

Smooth, clean lines of trailer body . . . no protruding snaps, handles or hinges to mar the sleek

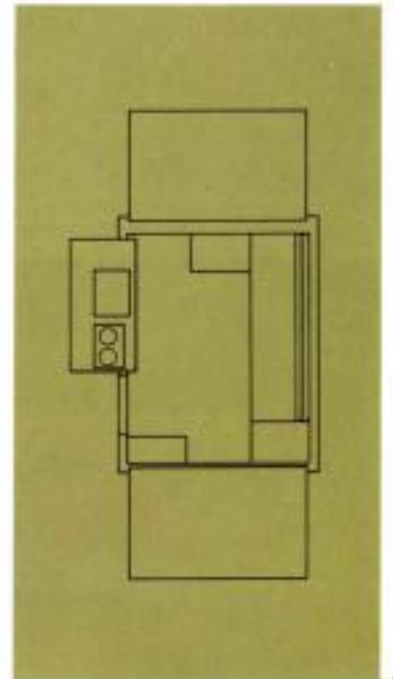
looks . . . or to snag clothing. Even the tail-lights are flush with concave housing . . . and further protected by adjacent right-angle reflecting wall.

Profile is enhanced, too, by absence of conventional leaf-springs. All CT-1's have torsion bar independent wheel suspension for greater stability, easier servicing.

Large Hub Caps are heavily chromed, highly polished to add more enduring beauty.

New automotive-styled wheel-openings have attractive "sculptured" look.





(Model CT-171 shown)



Full 6'6" headroom under new SOFT-HARD-TOP.



Dinette table can be used for outside dining.

How about a vacation retreat at the seashore? ... and in the mountains? nestled in the woods? or any place—any time—you please?

All yours at low cost in the new

Coleman CT-170

SOFT-HARD TOP

- 100 square feet of living space
- Sleeps 6 on 3" polyfoam mattresses
- Swing-out BAY WINDOW GALLEY
- 6'8" wide * 8'9" long * 16' long open

Looks like a hard-top, doesn't it? The new vinyl top over rigid plated frame is another first for Coleman. It's the CT-1 SOFT HARD-TOP... that gives you the smart styling and convenience of a hard-top, yet lighter weight and lower cost too. And... under that durable, waterproof roof, you have all the deluxe features and spaciousness of the CT-180, except no storage trunk.

CT-1 SOFT HARD-TOP is not just a travel cover. Contents of the trailer stay dry even when the trailer is closed and left out in inclement weather.

Model CT-171—same as CT-170 except interior is outfitted with spacious Lounge-Seat and dinette table only. No Bay Window Galley or Ice Chest.

Model CT-172—same as CT-170 except no interior furnishings or BAY WINDOW GALLEY.



Close-woven heavy-duty canvas is pre-shrunk, mineral-dry treated. Vinyl sealed fiberglass screening.



Smooth-sliding jumbo-sized zippers.



... or the Compact

Coleman CT-160

SOFT-HARD-TOP

- 90 square feet of living space
- Sleeps 4 on 3" polyfoam mattresses
- Swing-out BAY WINDOW GALLEY
- 7' long * 5' wide closed * 13' wide open

Only compact camping trailer equipped with Bay Window Galley plus hard-top styling!

Designed for the happy-go-lightly campers ... who want full walk-around space inside to outfit as they please. All the engineering excellence of the larger CT-1's... trimmed down to economy size for the smaller family. Tows easily by most compact cars. Sleeps four on foam mattresses in double beds ... more in main trailer area. Bed wings fold out for sleeping. Exterior grade bonded plywood floor is wood-life treated, covered in red nylon carpeting! Large entrance has new swing down Step-Door with zippered entry.

Model CT-161—same as CT-160 except no BAY WINDOW GALLEY



Facts to help you select the CT-1 best for your family

SPECIFICATION CHART:		190	180	181	170	171	172	160	161	
Chassis and Body	Torsion Bar Suspension	S	S	S	S	S	S	S	S	
	Tire sizes	5.70/5.00-8"	S	S	S	S	S	S	O	O
		4.80/4.00-8"	O	O	O	O	O	O	S	S
		5.30/4.80-12"	O	O	O	O	O	O	O	O
	Hub Caps	S	S	S	O	O	O	O	O	
	Tongue jack	S	O	O	O	O	O	O	O	
	Safety chains & 1½" ball hitch	S	S	S	S	S	S	S	S	
	Interlocked frame	S	S	S	S	S	S	S	S	
	Woodlife treated floor	S	S	S	S	S	S	S	S	
	Trailer size, closed . . . width	length	6'8"	6'8"	6'8"	6'8"	6'8"	6'8"	5'	5'
		length	12'	8'9"	8'9"	8'9"	8'9"	8'9"	7'	7'
	Trailer size, open . . . width	length	6'8"	6'8"	6'8"	6'8"	6'8"	6'8"	13'	13'
		length	20'	16'	16'	16'	16'	16'	7'	7'
	White aluminum body, gray aluminum hard-top	S	S	S	NA	NA	NA	NA	NA	
Green aluminum body, white reinforced vinyl soft hard-top	NA	NA	NA	S	S	S	S	S		
Trunk	S	S	S	NA	NA	NA	NA	NA		
Step Door	S	S	S	S	S	S	S	S		
Aluminum Screen Door	S	S	S	S	S	S	NA	NA		
Interior	Floor area . . . width	length	6'1"	6'1"	6'1"	6'1"	6'1"	4'8"	4'8"	
		length	10'9"	7'5"	7'5"	7'10"	7'10"	7'10"	6'2"	
	Cubic feet—total storage	93	67	67	70	70	70	42	42	
	Cabinet storage	29	21	19	16	14	NA	NA	NA	
	Red nylon carpeting	S	S	S	S	S	S	S	S	
	Lounge bed and table	2-S	S	S	S	S	NA	NA	NA	
	Main lounge bed mattress size—48 x 75	S	S	S	S	S	NA	NA	NA	
	Bay Window Galley	S	S	NA	S	NA	NA	S	NA	
	Gas bottle and regulator	S	S	O	S	O	O	S	O	
	Ice Chest and multi-purpose holder	S	S	NA	S	NA	NA	NA	NA	
	Slide-out beds	S	S	S	S	S	S	NA	NA	
	Fold-out beds	NA	NA	NA	NA	NA	NA	S	S	
	Mattress size—46 x 72	S	S	S	S	S	S	S	S	
	Adult sleeping capacity	8	6	6	6	6	4	4	4	
Interior finish—wood grain	S	S	S	S	S	S	NA	NA		
Interior height open	6'6"	6'6"	6'6"	6'6"	6'6"	6'6"	6'3"	6'3"		
Exterior	Heavy-duty canvas & zippers	S	S	S	S	S	S	S	S	
	4-way full screen ventilation	S	S	S	S	S	S	S	S	
Accessories	Plastic bay window & curtains	O	O	NA	O	NA	NA	O	NA	
	Privacy curtains	O	O	O	O	O	O	O	O	
	Canopy	O	O	O	O	O	O	O	O	
	Add-A-Room	O	O	O	O	O	O	O	O	
	Heater	O	O	O	O	O	O	O	O	
General	Road height	44	44	44	44	44	44	42	42	
	Unladen weight by series	993	911	911	873	873	873	529	529	
		S=Standard			O=Optional			NA=Not Available		

Features and specifications subject to change.

© Copyright 1986 Coleman Camping Trailers Inc. Div.

The Coleman Guarantee—strongest in the industry

Coleman Service—nationwide!

COLEMAN CAMPING TRAILERS, INC. 13300 Wall St., Elm Grove, Wisconsin 53122

Subsidiary of: THE COLEMAN COMPANY, INC.

greatest name in the great outdoors



maker of the world-famous Coleman
Lanterns, Camp Stoves, Coolers, Jugs,
Catalytic Heaters, Tents, Sleeping Bags.